

# 烫金膜色卡



Rongxuan workshop (Guangzhou)  
Creative Technology Co., Ltd

Note: the internal picture of the natural color card is only the actual effect picture, not the actual texture of the bronzing film

## [usage method ]

Clean the surface: clean the surface of the object to be scalded, and remove dust, oil, etc.

Spread out the foil evenly and put it on the bronzing machine. Pay attention not to wrinkle the surface of hot gold foil.

● appropriate foil must be selected according to different types of stamping. Hot stamping must master the temperature, pressure, hot stamping speed of the tripartite cooperation, and according to the hot stamping materials, hot stamping area is different.

● 12um stamping time is 1-2 seconds, flat stamping temperature is about 120-140 °C, rolling stamping temperature is about 120-140 °C, and stamping pressure is 4kg / cm<sup>2</sup>.

● the stamping time of 16um is 0.5-1 second.

● the stamping pressure is 5kg / cm<sup>2</sup> (scalding).

● hot stamping temperature (silicone wheel) is about 180 °C - 220 °C.

### [hot stamping temperature]

1. Use the metal mold in the flat ironing machine at 140-160 °C.

2. Use metal mold to roll iron around 160-180 °C.

3. Use silica gel plate at 160-180 °C.

4. Use silica gel plate on the peripheral scalding machine 170-190 °C.

5. For fabric requirements, you can use transparent paste 30-34t screen printing for 2-3 times of bottoming, and then use imitation bronzing paste for 2-3 times of overprinting after the surface is dry to make it completely cover the bottoming;

6. After drying, bake in tunnel at 140 °C for 2 minutes;

7. If you want the surface to be smooth, you can press the transparent film of the press for one time, the temperature is about 150 °C, and the time is 10 seconds

## [Attention to use ]

When the bronzing machine is heated to the normal temperature, the bronzing paper is still not hot.

There are two reasons:

1. It is not suitable to iron the base material with gold foil
2. If the hot stamping temperature is not enough, it can be re heated for testing. If the blue light is emitted after hot stamping, the hot stamping temperature is too high, and it can be properly cooled and re heated. [warm tips]:
  1. The above information is for reference only, and all are subject to customer test;
  2. It is recommended to test before production, and then use it in large quantities when it is feasible, otherwise, you will be responsible for the consequences
  3. The relevant technical parameters are different due to the different operating environment, so they can be widely used only after passing the test.

[storage]

1. The temperature is about 5 °C -- 20 °C
2. Humidity about 30-70%
3. Vertical placement
4. Avoid direct sunlight

Color: silver, gold, light gold, sub gold, sub silver, red, blue, green, purple, laser plain gold, laser plain silver, laser various patterns, etc.

Classification: fabric bronzing paper is divided into laser and ordinary:

Laser has a variety of different laser patterns and gold, silver, red, green, blue, black or transparent and other different colors. The brightness of laser bronzing paper made of different colors and patterns is different;

There are more than 60 kinds of common colors, such as gold silver, dumb gold, dumb silver, red, blue, green, purple, coffee, brown, gray, black, bronze, peach, five color, seven color (amoeba), color bar, pearl color, full transparency, etc. (bronzing paper of other colors can be produced according to polite requirements).

Product specification: 16U \* 75cm \* 120m or 12U \* 75cm \* 120m, or products of different thickness, width or length can be customized according to different requirements of customers

Product standard packaging: 10 rolls / box

Environmental protection certification: pass the authoritative professional test environmental protection certificate (deduct RoHS, EN71, reach 38 items

PHthal ATE 16P、ASTM-963-08、91- 338-EEC)。



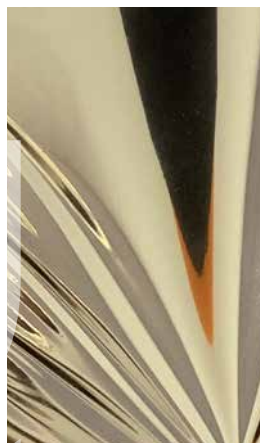
**C-GD1**



**C-GD2**



**C-GD3**



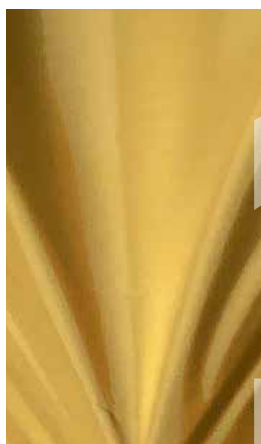
**C-GD4**



**C-GD5**



**C-SR**



**C-MG**



**C-MS**



**C-TS(透明)**



**C-LG**



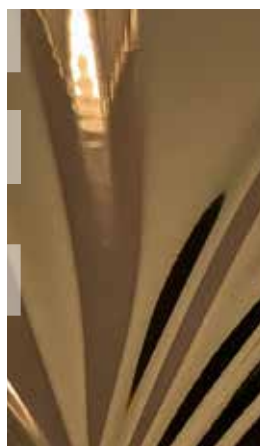
**C-DGG**



**C-KZG**



**C-BK**



**C-CF**



**C-LB1**



**C-CLB2**



**C-RB**



**C-LGG**



**C-GR**

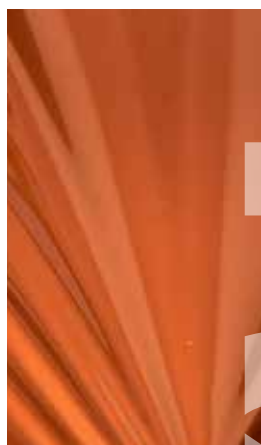


**C-CU1**





**C-GU2**



**C-ORG**



**C-LP**



**C-PU**



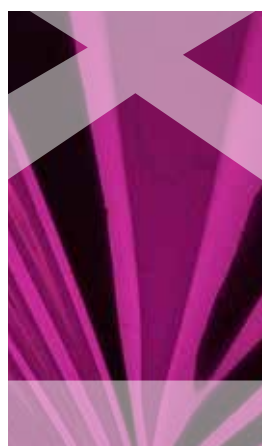
**C-GP**



**C-LPK**



**C-PK**



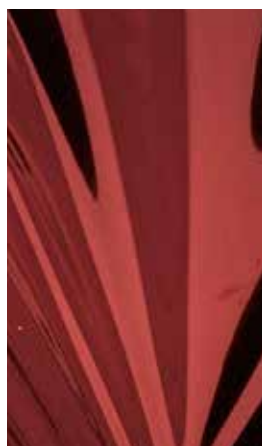
**C-FU**



**C-MVR**



**C-MRR**



**C-RD**



**C-AM**



**C-MR**



**C-MB**



**C-CR**



**C-RG**



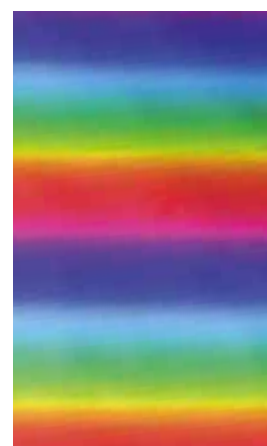
**C-RO**



**C-RR**



**C-RFB**



**C-TC**





**C-TC2**



**C-TC3**



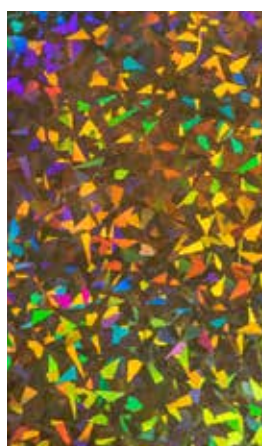
**C-TC4**



**C-GSD**



**C-SSD**



**G-DG**



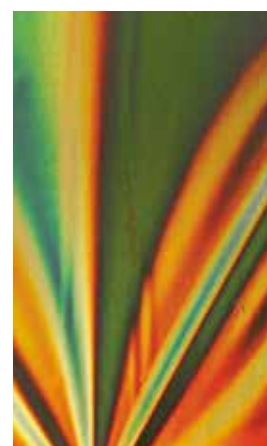
**C-DS**



**C-GWD**



**C-SWD**



**G-LLG**



**C-LS**



**C-YG**



**C-YS**



**C-EG**



**C-ES**



**C-AC1**



**C-AC2**



**C-AC3**



**W001**



**W002**





**W003**



**W004**



**W005**



**W006**



**W007**



**W008**



**W009**



**W010**



**W011**



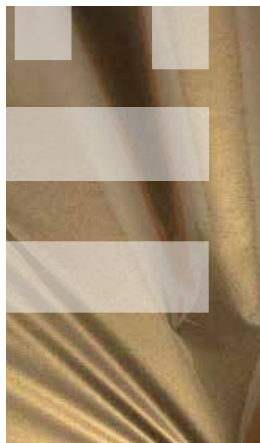
**W012**



**W013**



**W014**



**W015**



**W016**



**W017**



**W018**



**W019**



**W020**



**W021**



**W022**



**W023**



**W024**



**W025**



**W026**



**H001**



**H002**



**H003**



**H004**



**H005**



**H006**



**H007**



**H008**



**H009**



**H010**



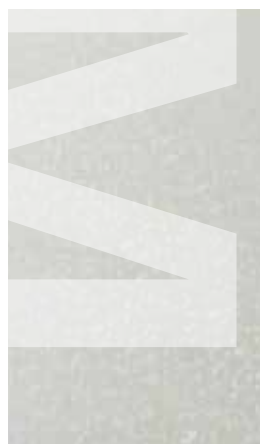
**7002**



**7004**



**7005**



**7009**



**7010**



**7013**





7014



7015



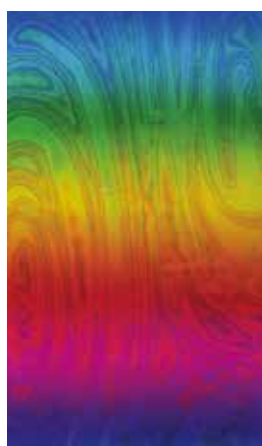
7018



7022



7030



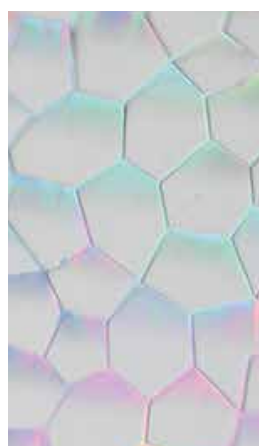
7101



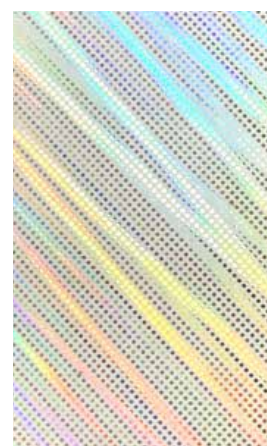
XL-001



XL-002



XL-003



XL-005



XL-010



XL-011



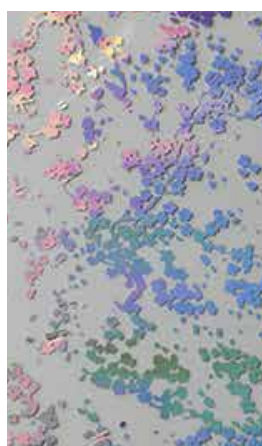
XL-012



XL-013



XL-014



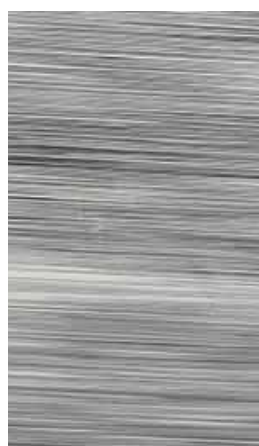
XL-016



XL-017



XL-018



XL-019



XL-020





**XL-021**



**XL-022**



**XL-023**



**XL-024**



**XL-025**



**XL-027**



**XL-028**



**XL-029**



**XL-030**



**XL-031**



**XL-032**



**XL-033**



**XL-034**



**XL-036**



**XL-037**



**XL-038**



**XL-041**



**XL-042**



**XL-043**



**XL-045**

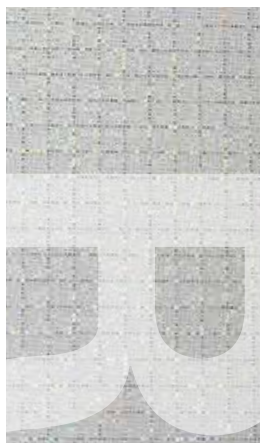




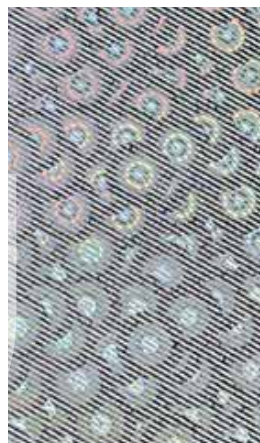
**XL-046**



**XL-047**



**XL-048**



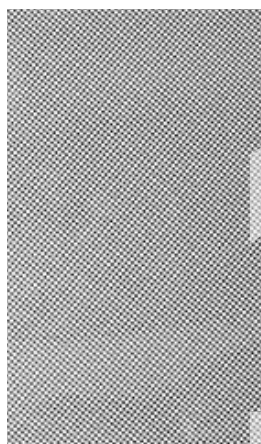
**XL-049**



**XL-050**



**XL-051**



**XL-053**



**XL-055**



**XL-056**



**XL-057**



**XL-058**



**XL-059**



**XL-060**



**XL-061**



**XL-065**



**XL-066**



**XL-069**



**XL-070**



**XL-071**

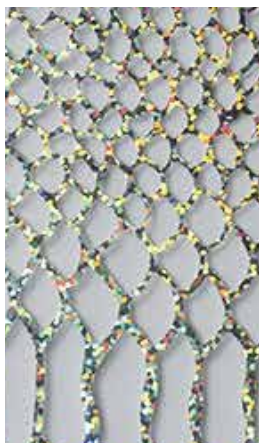


**XL-072**





**XL-073**



**XL-074**



**XL-075**



**XL-076**



**XL-077**



**XL-078**



**XL-079**



**XL-080**



**XL-081**



**XL-082**



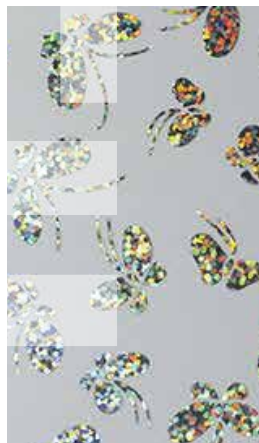
**XL-083**



**XL-084**



**XL-085**



**XL-086**



**XL-087**



**XL-088**



**XL-089**



**XL-090**



**XL-091**



**1001**





1002



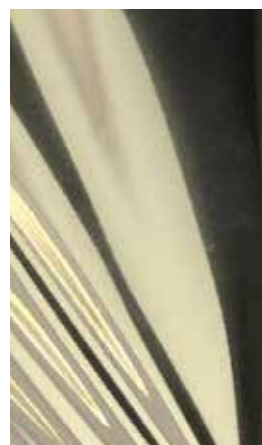
1003



1304



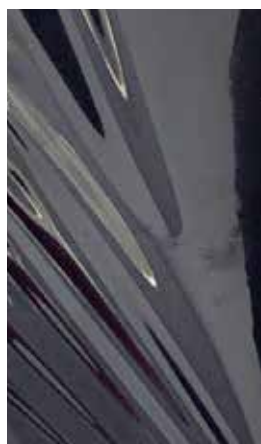
1305



1311



2013



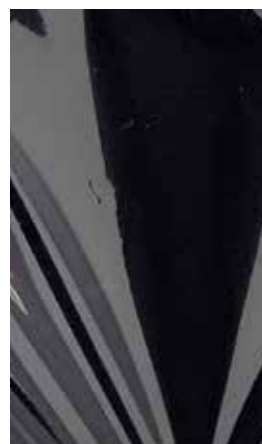
2014



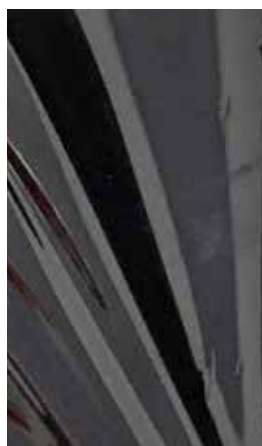
2015



2017



2018



2019



2021



2031



2032



2034



2035



2036



2040



2042



2043



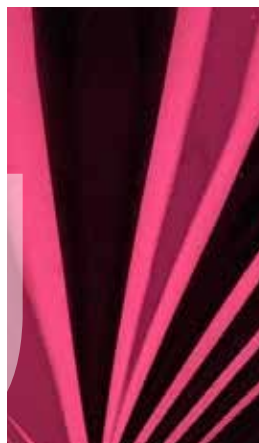
2045



2046



2049



2051



2061



2063



2064



2065



2075



2076



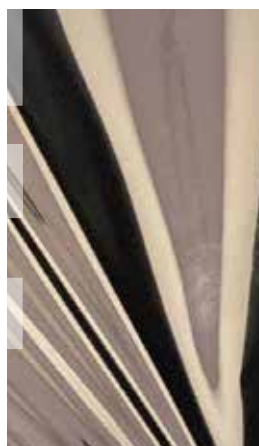
2077



2078



2079



2080



2081



2082



2083



2085



2087



2088





2091



2094



2311



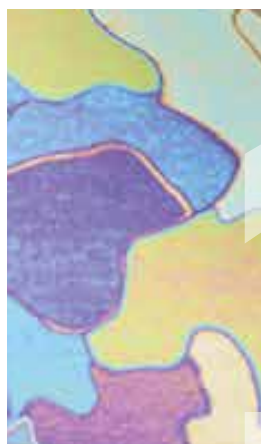
2312



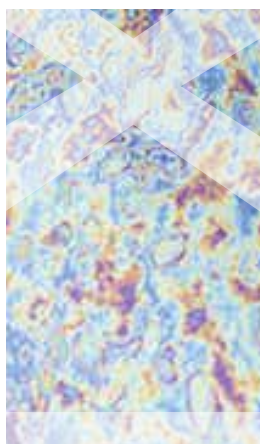
2313



2314



2408



2436



2437



3003



3005



3008



3011



3013



3021



3022



3023



3024



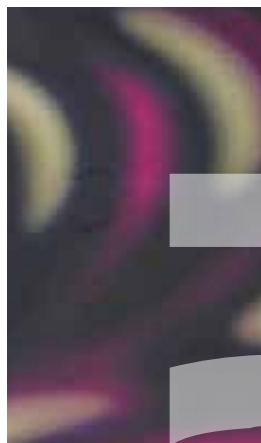
3025



3026



3066



3067



3071



3074



3075



3080



3083



3084



6005



6006



6011



6012



6013



6014



6740



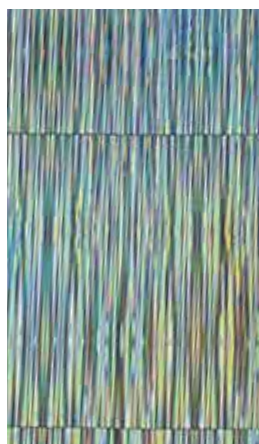
6742



6743



4216



4218

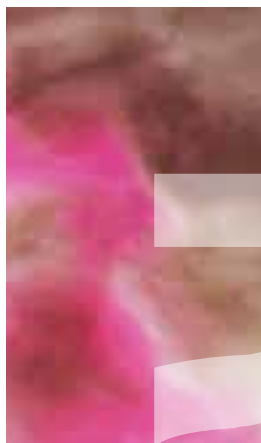


4001





3027



3028



3029



3030



3031



3032



3033



3034



3035



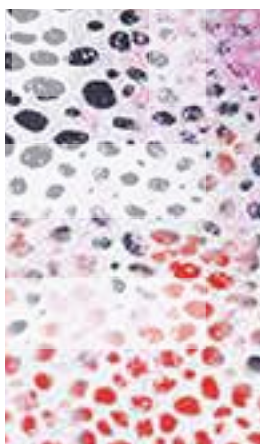
3036



3039



3040



3041



3042



3043



3044



3046



3051

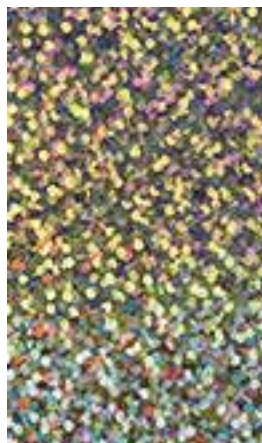


3053



3061





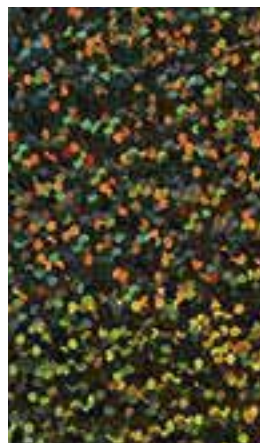
4002



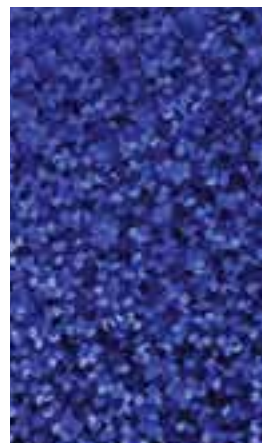
4003



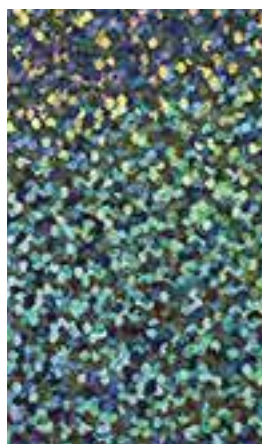
4005



4009



4011



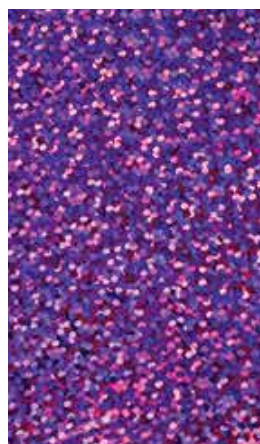
4012



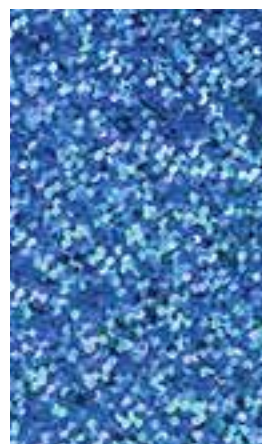
4013



4016



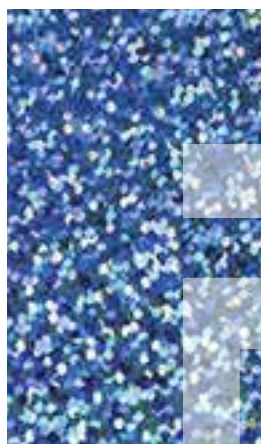
4017



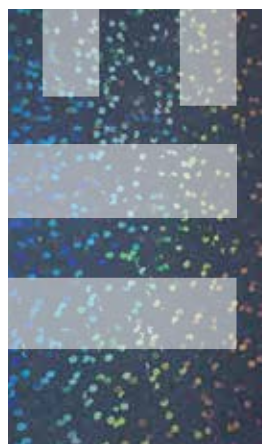
4018



4019



4020



4021



4022



4023



4101



4102



4107

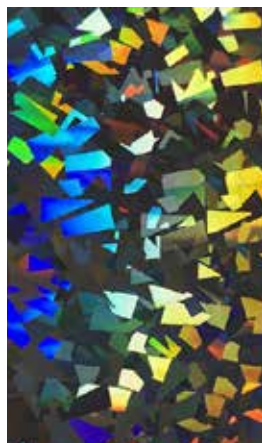


4108



4109





4111



4112



4113



4115



4116



4117



4118



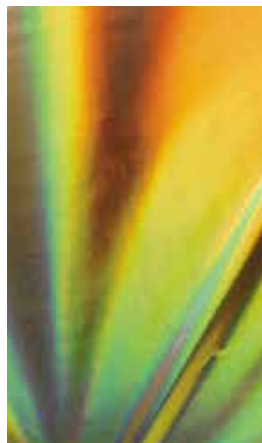
4119



4120



4201



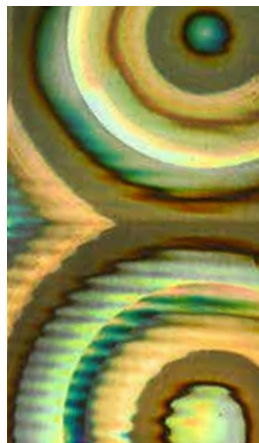
4202



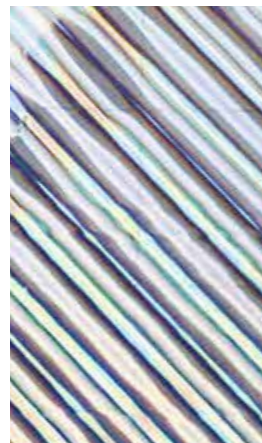
4210



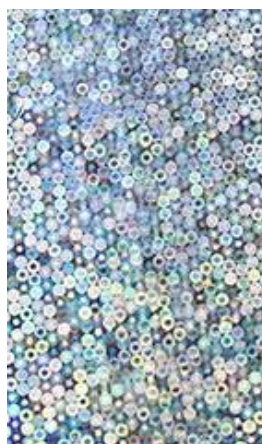
4211



4212



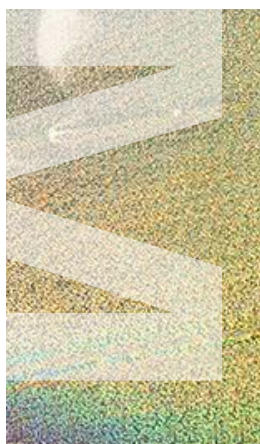
4213



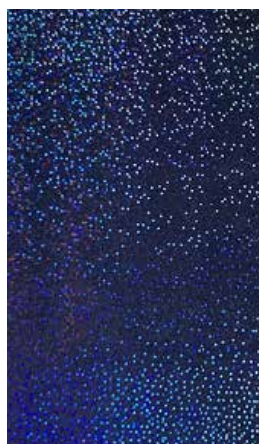
4214



4215



4219



4220



4221





4222



4223



4224



4225



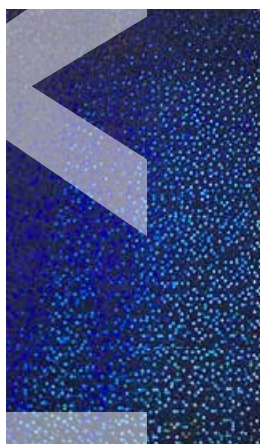
4226



4227



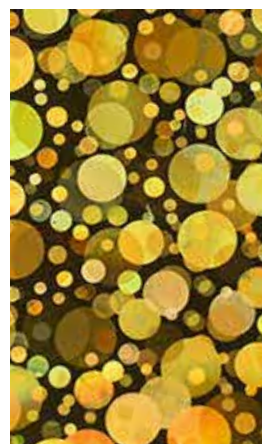
4228



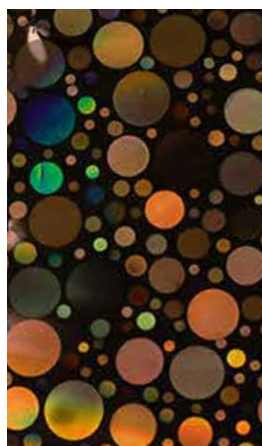
4229



4330



4331



4332



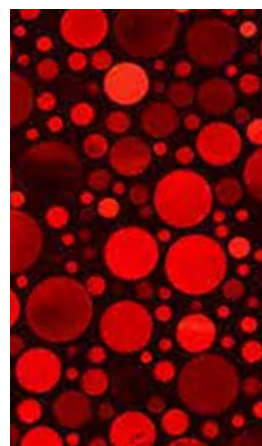
4333



4334



4335



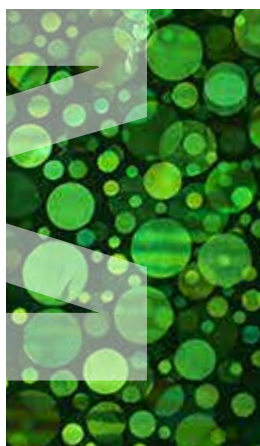
4336



4338



4339



4340

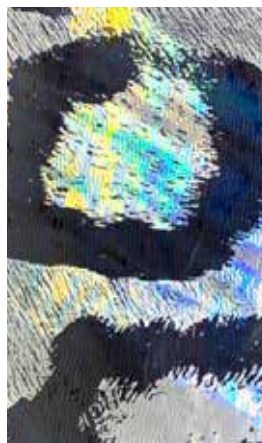


5002

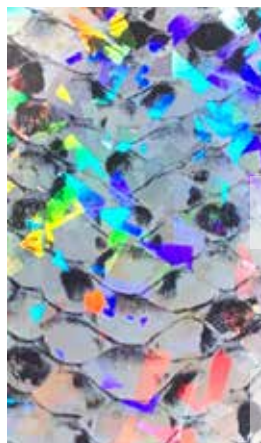


5003





5004



5005



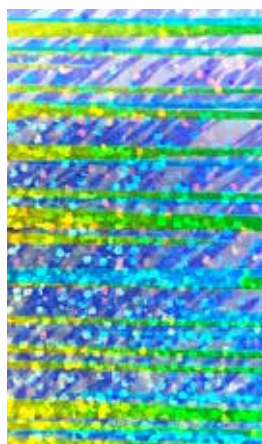
5007



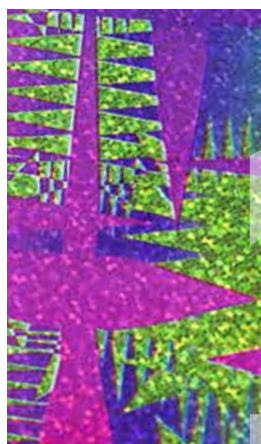
5008



5009



5103



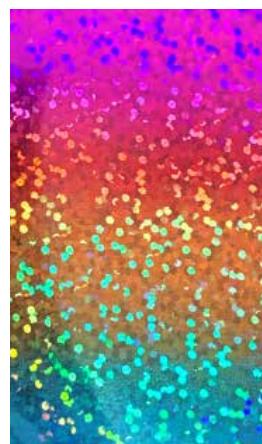
5104



5114



5115



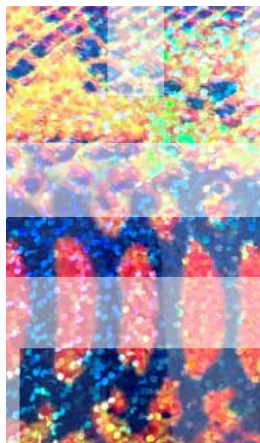
5116



5119



5120



5121



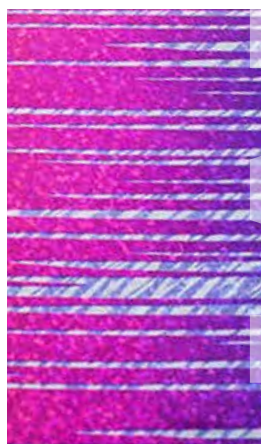
5122



5125



5126



5127



5130

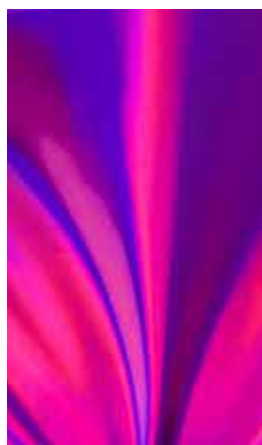


S001

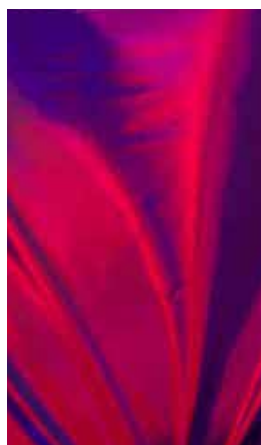


S002





**S003**



**S004**



**S005**



**S006**



**S007**



**S008**



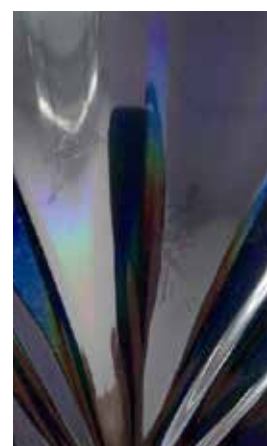
**S009**



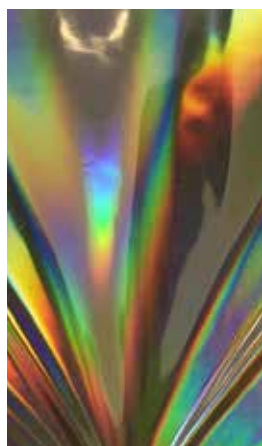
**S010**



**S011**



**S012**



**S013**



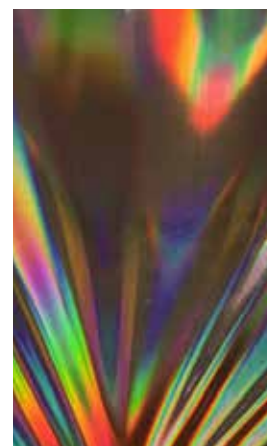
**S014**



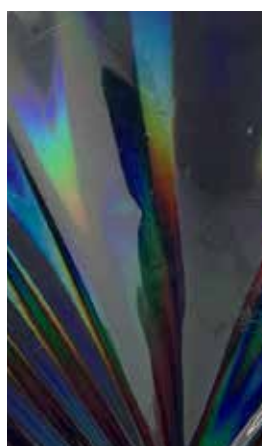
**S015**



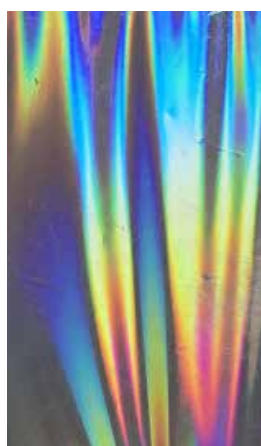
**S016**



**S017**



**S018**



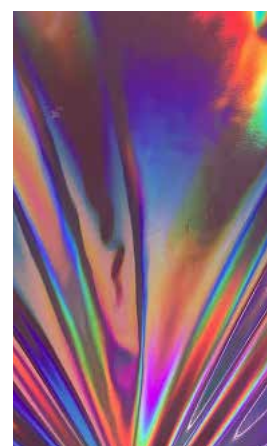
**9001**



**9002**

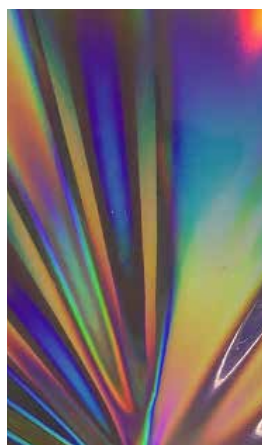


**9003**

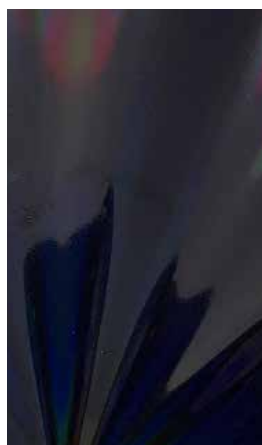


**9004**





9005



9007



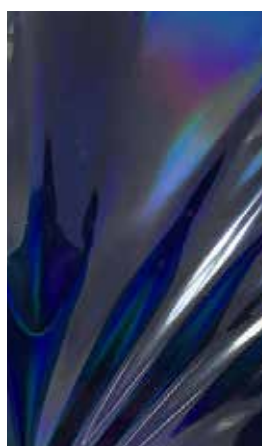
9008



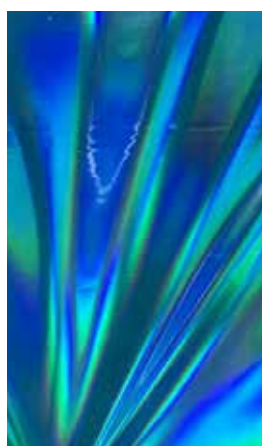
9100



9101



9102



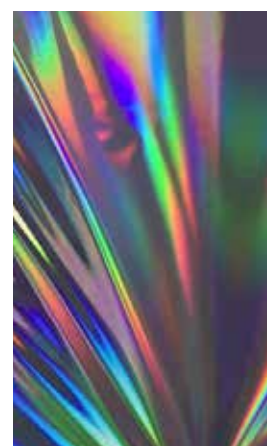
9103



9104



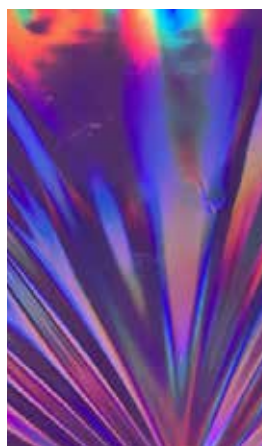
9106



9107



9108



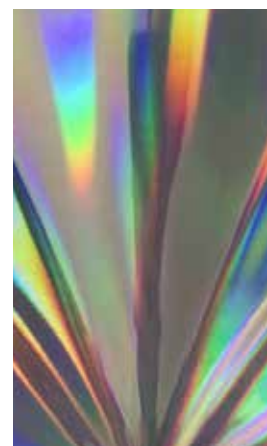
9109



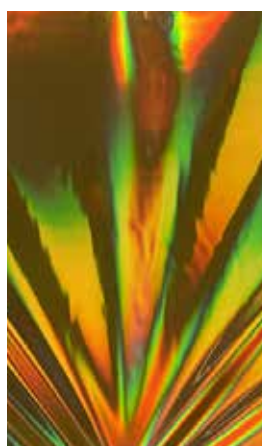
9200



9202



9204



9205



9300



9301



9304



9305





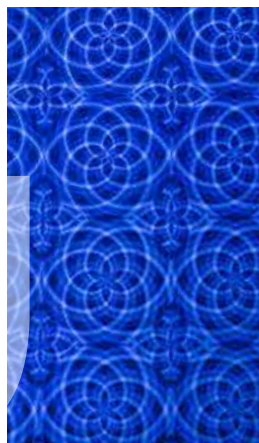
9306



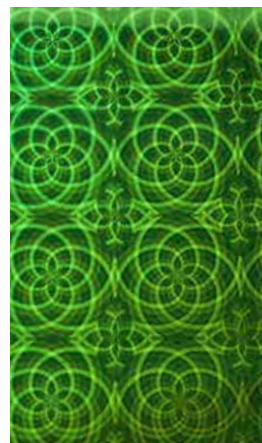
9307



9401



9402



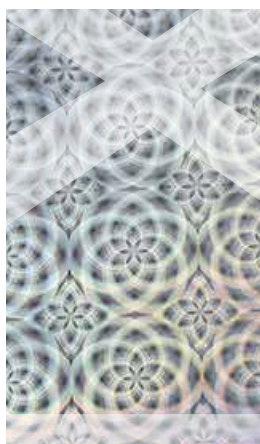
9403



9404



9405



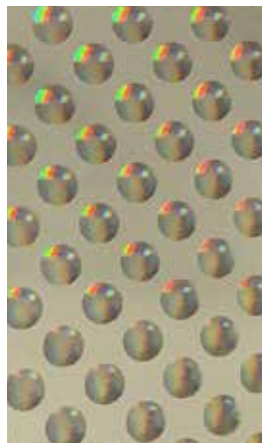
9406



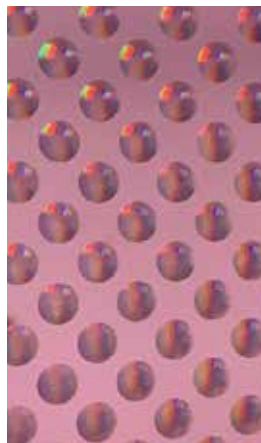
9407



9431



9432



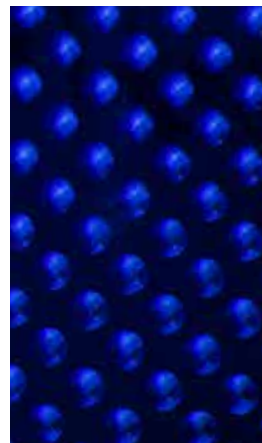
9433



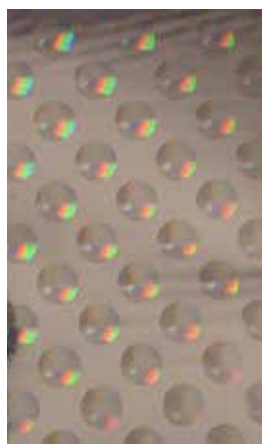
9434



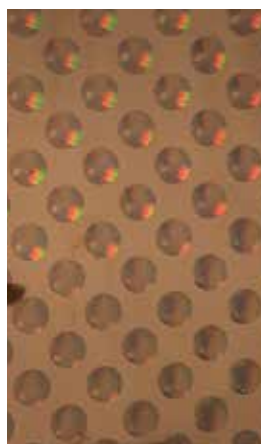
9435



9436



9437



9438



9439

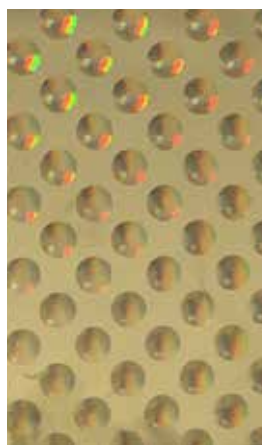


9440



9441





9443



9460



9461



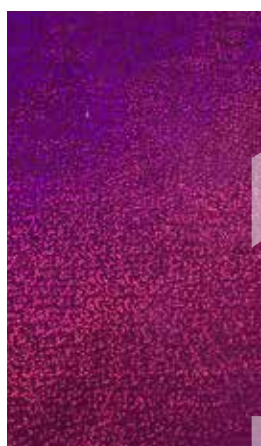
9462



9463



9464



9465



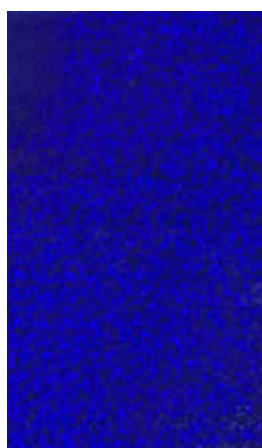
9466



9467



9468



9469



9470



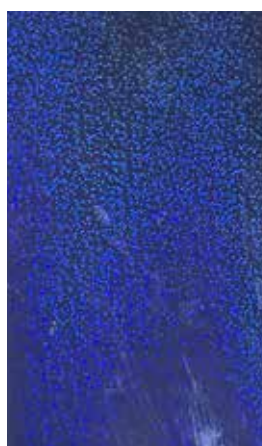
9471



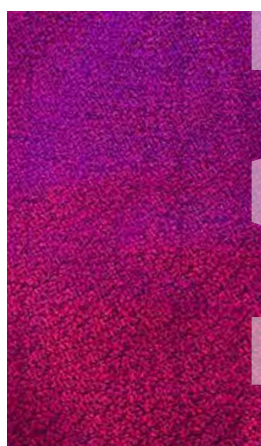
9472



9473



9474



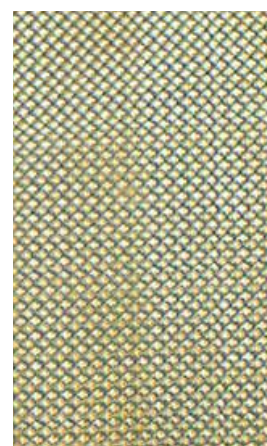
9475



9476



9530

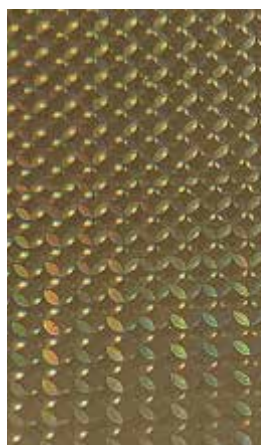


9531

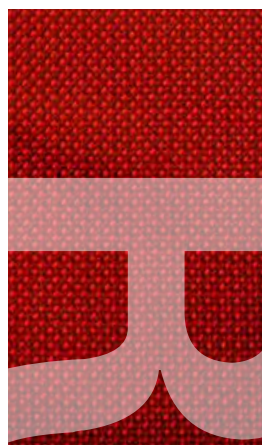




9532



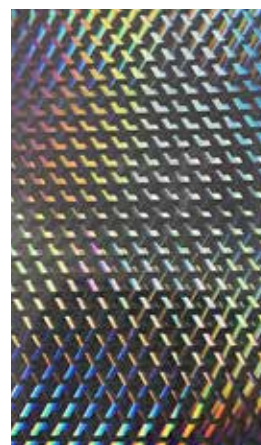
9532



9533



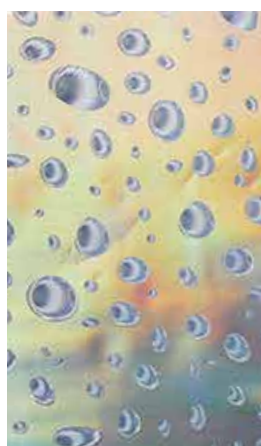
9534



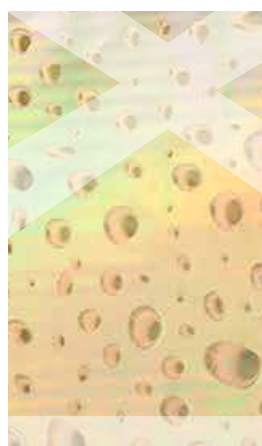
9555



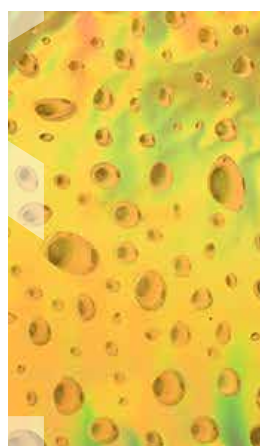
9557



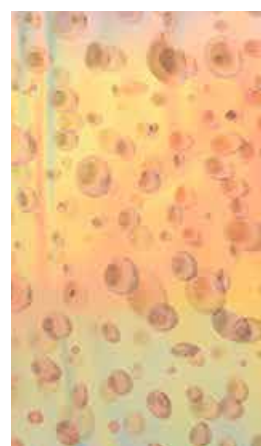
9601



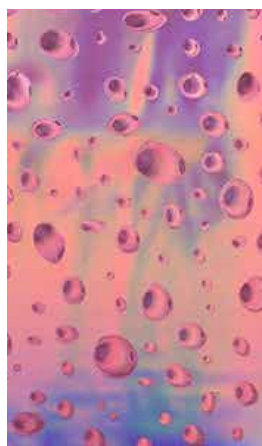
9602



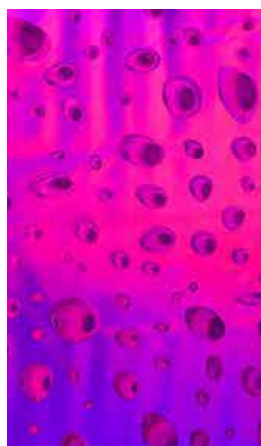
9603



9604



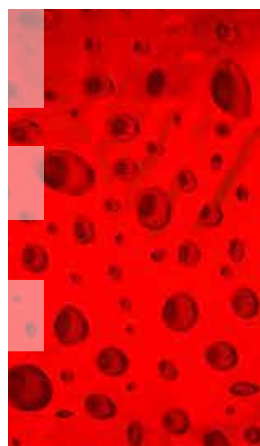
9605



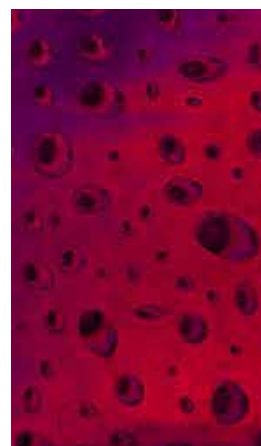
9606



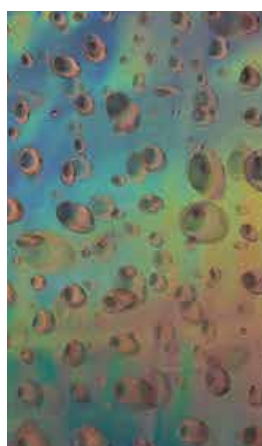
9607



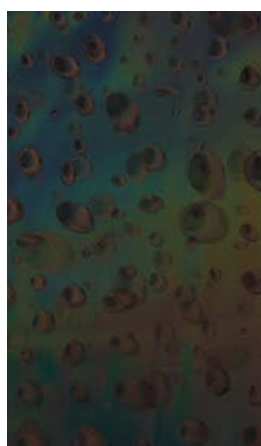
9608



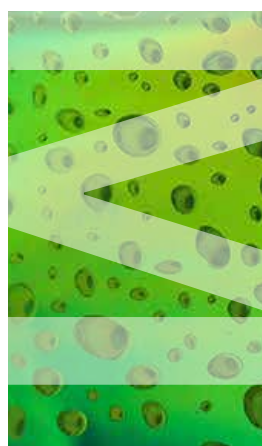
9609



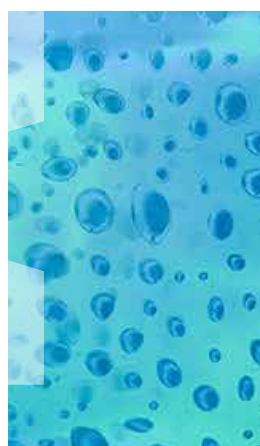
9610



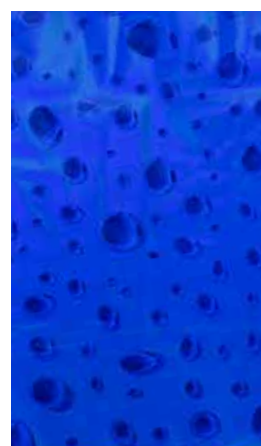
9611



9612

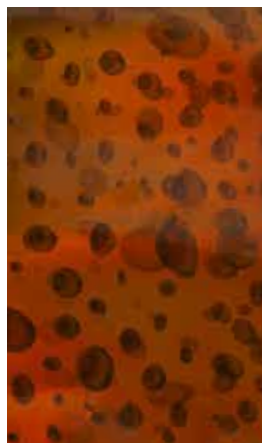


9613



9614





**9615**



**9620**



**GL-001**



**GL-002**



**GL-003**



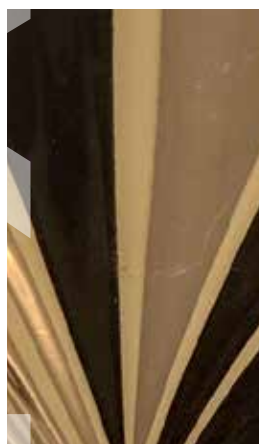
**GL-005**



**GL-006**



**GL-007**



**GL-009**



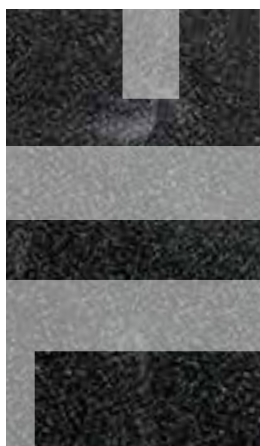
**GL-010**



**GLT-P01**



**GLT-P02**



**GLT-P03**



**GLT-P04**



**GLT-P05**



**GLT-P06**



**GLT-P07**



**GLT-P08**



**GLT-P09**



**GLT-P10**





**GLT-P11**



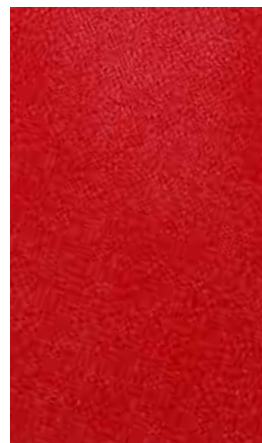
**GLT-P12**



**GLT-T01**



**GLT-T02**



**GLT-T03**



**GLT-T04**



**3D-MY**